



# MIDLOTHIAN ISD

## Organizational Chart 2020-2021

*Updated 4/09/2021*

# Courtney Carpenter, Ed.D., Interim-Superintendent of Schools

Courtney  
Carpenter  
Assistant Supt

- Curriculum / Instruction
- Specialized Learning
- DEIC
- Professional Development
- Instructional Technology
- Advanced Academics
- Accountability /Assessment

- Leadership Development
- Executive Coaching
- Coordination of District-Wide PD
- Strategic Plan Process/Revision
- District-wide Systems Coordination
- District Goals Process & Metrics

Karen  
Fitzgerald  
Asst. Supt. for  
Engagement and  
Strategic Initiatives

- Education Foundation
- Public Relations
- Internal Communications
- Marketing
- Community Partnership
- Strategic Plan

Theda  
McGrew

Administrative  
Assistant

KayLynn  
Day  
Assistant Supt. of HR  
& Student Services

- Human Resources
- Student Services
- Safety and Security
- Payroll
- Diversity, Equity, & Inclusion
- Benefits

Jim  
Norris  
Assistant Supt. of  
Finance &  
Operations

- Finance/Budgeting/Accounting
- Bond Project Oversight
- Construction
- Transportation
- Maintenance
- Food Service

Leslie  
Garakani  
Chief  
Technology  
Officer

- Network
- Bond – Technology
- M\*Powered
- Public Educ. Inform. Systems
- Data Systems Management

# Courtney Carpenter, Ed.D., Interim-Superintendent of Schools

Kalee  
McMullen

Principal  
Midlothian High School

Ryan Timm

Principal  
Baxter Elementary School

Stacy  
Germany

Principal  
Dolores McClatchey  
Elementary

Krista  
Tipton

Principal  
Heritage High School

Carolyn  
Spain,  
Interim

Principal  
Irvin Elementary School

Georgie  
Swize

Principal  
Mt. Peak Elementary

Carly  
Woolery

Principal  
Walnut Grove Middle School

Karena  
Blackwell

Principal  
Longbranch Elementary

Hollye  
Walker

Principal  
Vitovsky Elementary

Kristopher  
Vernon

Principal  
Frank Seale Middle School

Shannon  
West

Principal  
LaRue Miller Elementary

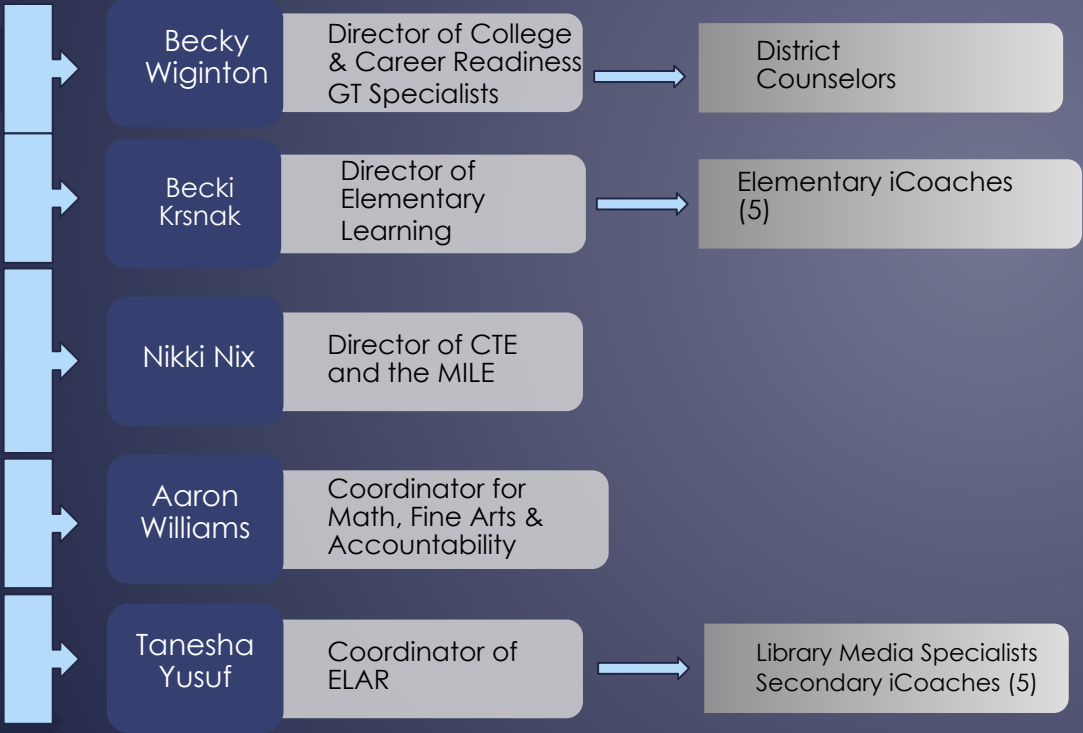
Amanda  
Rodgers

Principal  
Dieterich Middle School

# Courtney Carpenter, Asst. Supt. for Administration

Shelle  
Blaylock

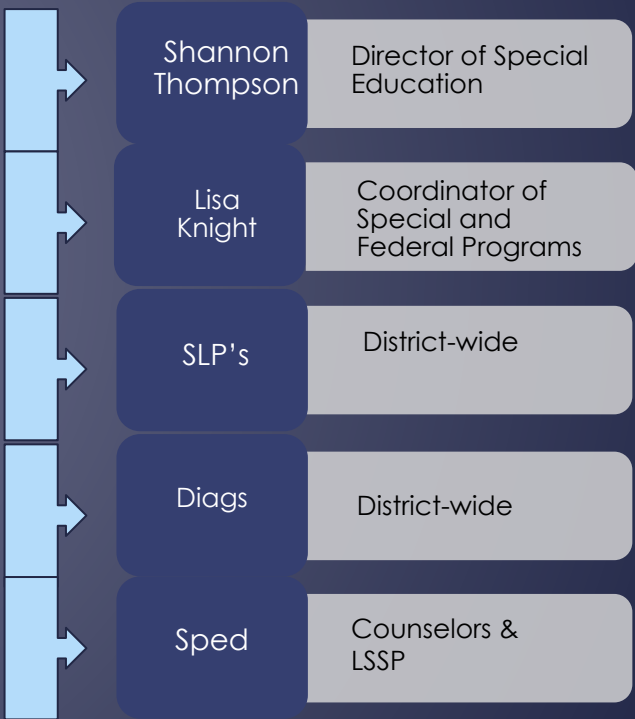
Sr. Executive Director  
of Curriculum &  
Instruction (Secondary  
Learning)



**C & I Administrative Support**  
Jamie Greene - Administrative Assistant

Melissa  
Wolfe

Executive Director of  
Specialized Learning



**Specialized Learning Administrative Support**  
Vanessa Hardegree - Secretary  
Terri Driggers - Special Ed PEIMS  
Ernestino Alejo - Special Ed Records

# Leslie Garakani, Chief Technology Officer

Gregg Burcham

Director of Technology Services

Justin  
Wright

Network  
Administrator

Brandon  
Logan

Systems  
Administrator

Jana  
Thornton

Mobile  
Solutions  
Specialist

Vanya  
Worley

Acquisitions  
& Asset  
Manager

Chris  
Dotson

Technology  
Specialist

John  
Allen

Technology  
Specialist

Noe  
Gonzales

Technology  
Specialist

Brett  
Matthena

Technology  
Specialist

Cassandra  
McDorman

Technology  
Specialist

Angela  
Harrell

Technology  
Specialist

Jessica McWhorter

Director of  
Information Systems

Emily Jett

PEIMS Coordinator

Lydia  
Smith

SIS Support

Jennifer  
Wilt

Systems Analyst

**Technology Secretary**  
Pat Daniels

# KayLynn Day, Assistant Superintendent for HR and Student Services

Al Hemmle

Student Services  
Administrator

Chalisa  
Fain, J.D.

Director of  
Diversity, Equity  
and Inclusion

Shorr  
Heathcote

Director of Human  
Resources

SRO's

Commander  
Tim Hicks

Safety  
&  
Security

Commander  
Tim Hicks

Nurses

Judi Fiorenza

Kelly  
Golden

HR Manager

Kara Hemmle  
Benefits

Caleen  
Heard  
HR Clerk

Jennifer  
Wren

Payroll  
Supervisor

Jessica  
Payne  
Payroll Clerk

Rebecca  
Grogan  
Payroll Clerk

Glenda  
Dooley

Childcare

## HR Administrative Support

Shannon Wayland - Administrative Assistant  
Debbie Fallen - MISD Receptionist  
Deborah Essary - AESOP Coordinator



# Jim Norris, Asst Supt for Finance & Operations

Sandy  
Bundrick

Controller

Deanna  
Cannon

Transportation

Rola  
Fadel

Director of  
Architecture Projects

Brian  
Blackwell

Exec Director of  
Finance and  
Operations

Stephanie  
Moore

Accounts Payable

Tina Oakley

Support  
Accountant

Shana  
Volentine

Purchasing  
Agent

Margo  
Hughson

Lead Accounts  
Payable

Marie  
Anderle

Admin Assistant  
for Finance

Reed Bass

Construction  
Coordinator

Carlos  
Rivera

Coordinator of  
Custodial Services

Scott Sparks

Coordinator of  
Maintenance

Donette  
Moss

Admin Assistant for  
Rola Fadel

Aramark Food Service

# Karen Fitzgerald, Assistant Superintendent for Engagement & Strategic Innovation

